

TV SHOW BIBLE TEMPLATE



LOGLINE

In 2059 a divorced, old fashioned cop is assigned a detective post on an interstellar outpost, but just after he accepts, he is given sole custody of a son he barely knows.

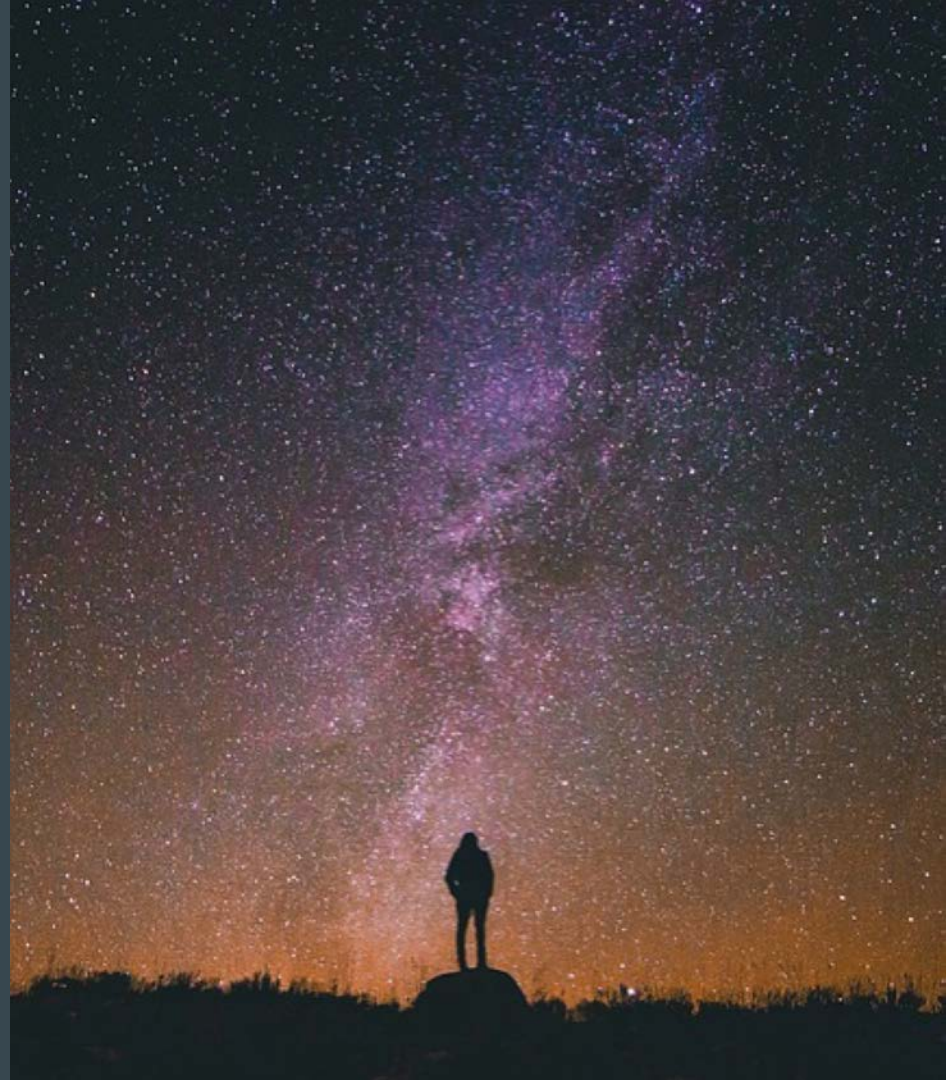
ONE PAGE PITCH

Class aptent taciti sociosqu ad litora torquent per conubia nostra, per inceptos himenaeos. Curabitur sodales ligula in libero. Sed dignissim lacinia nunc. Curabitur tortor. Pellentesque nibh.

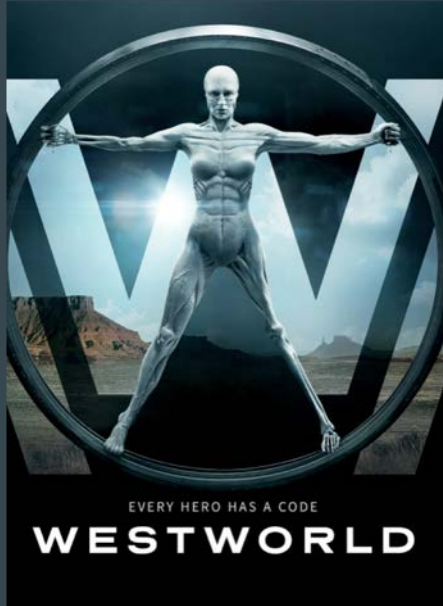
Aenean quam. In scelerisque sem at dolor. Maecenas mattis. Sed convallis tristique sem.

Proin ut ligula vel nunc egestas porttitor. Morbi lectus risus, iaculis vel, suscipit quis, luctus non, massa. Fusce ac turpis quis ligula lacinia aliquet. Mauris ipsum.

Nulla metus metus, ullamcorper vel, tincidunt sed.



SHOW CROSS



MEETS



MEETS



LEAD CHARACTER

Mike Gleason (mid-late 30's). "Gleason" as he's known to some co-workers, a decorated war veteran, Mike has been on the peacekeeping force for nearly 10 years.

Divorced and not on speaking terms with his wife. He's barely met but when his wife dies suddenly, he's left as the 8 year old boys only caretaker.

Mike is an old fashioned cop, used to dealing with humans here on earth. He deserves a detective position but frustration has mounted as it hasn't materialized.

Until now.

The catch? The position available to him is on an off world gas mining colony. He'll be dealing with androids, aliens, and all sorts of corruption. He doesn't want the gig. And he's got an 8 year old barely knows in tow. But how can he turn it down?





SUPPORTING CHARACTER

Gordon Cameron(late 60's) is the chief operating officer for the Wayland Corporations Gas Mining facility at New Tyrelle.

Cameron has total power on New Tyrelle. The outpost has little in the way of law or oversight. Far from the rest of Wayland Corp., Cameron rarely has to answer to anyone. When he does, he can get away with lying.

While he presents as a friendly and comforting presence, he is anything but. He sees his post at New Tyrelle as an opportunity to take whatever he wants and remain beyond reproach.

Lawlessness and a multitude of safety hazards have forced Wayland Corp to request additional law enforcement be sent to New Tyrelle. Cameron is not thrilled.

SUPPORTING CHARACTER

A.L.I.S.O.N. (3 years since production) is an artificial life form built to manage surgical tasks and medical diagnoses. She was one of the fourth generation of such devices created to aid in the treatment of injuries to employees stationed at mining facilities.

Built to have extreme strength, and tolerance for all weather and space conditions, the A.L.I.S.O.N. model were also designed to read human emotions and learn how to anticipate their medical needs. As such, A.L.I.S.O.N. is becoming compassionate towards humans, and has developed a desire to see them survive.

She has begun to suspect that there is something innately wrong and dangerous about the work they do on the colony, and is less and less interested in serving Wayland Corp. and more interested in the fate of the humans that work for it.





SUPPORTING CHARACTER

Lance O'Bannon (late 20's) was born on the New Tyrelle colony. His parents both worked in the casino frequented by most of Wayland's employees, and both died when Lance was young.

He's a patrolman for the practically non-existent police force on New Tyrelle. He wants to get off the colony.

His uncle, his only living family, is a high-ranking member of the crime ring that runs the casino.

Towards the end of the pilot we learn his long-time girlfriend is pregnant. He debates turning to his uncle for help.

PILOT

Lorem ipsum dolor sit amet, consectetur adipiscing elit. Integer nec odio. Praesent libero. Sed cursus ante dapibus diam. Sed nisi. Nulla quis sem at nibh elementum imperdiet. Duis sagittis ipsum. Praesent mauris. Fusce nec tellus sed augue semper porta. Mauris massa. Vestibulum lacinia arcu eget nulla.

Class aptent taciti sociosqu ad litora torquent per conubia nostra, per inceptos himenaeos. Curabitur sodales ligula in libero. Sed dignissim lacinia nunc. Curabitur tortor. Pellentesque nibh. Aenean quam. In scelerisque sem at dolor. Mæcenās mattis. Sed convallis tristique sem. Proin ut ligula vel nunc egestas porttitor. Morbi lectus risus, iaculis vel, suscipit quis, luctus non, massa. Fusce ac turpis quis ligula lacinia aliquet. Mauris ipsum. Nulla metus metus, ullamcorper vel, tincidunt sed, euismod in, nibh.

Quisque volutpat condimentum velit. Class aptent taciti sociosqu ad litora torquent per conubia nostra, per inceptos himenaeos. Nam nec ante. Sed lacinia, urna non tincidunt mattis, tortor neque adipiscing diam, a cursus ipsum ante quis turpis. Nulla facilisi. Ut fringilla. Suspendisse potenti. Nunc feugiat mi a tellus consequat imperdiet. Vestibulum sapien. Proin quam. Etiam ultrices. Suspendisse in justo eu magna luctus suscipit.

Sed lectus. Integer euismod lacus luctus magna. Quisque cursus, metus vitae pharetra auctor, sem massa mattis sem, at interdum magna augue eget diam. Vestibulum ante ipsum primis in faucibus orci luctus et ultrices posuere cubilia Curae; Morbi lacinia molestie dui. Praesent blandit dolor. Sed non quam. In vel mi sit amet augue congue elementum.

EPISODE CONCEPTS

EPISODE 1: "DISCOVERY"

Gleason investigates a violent murder in one of New Tyrelle's poorer districts. His son Max struggles to make friends and can't get adjusted to their new life.

EPISODE 2: "THE KEY"

Gordon asks Gleason to personally attend to a potentially criminal concern he has over a key employee. ALISON makes a disturbing discovery that a recent work injury was no accident.

EPISODE 3: "DEJA VU"

Gleason and Lance are caught in a firefight, Gleason suffers severe injuries. Lance has to choose between what's best for his family and his own moral code.

EPISODE 4: "LOREM IPSUM"

Lorem ipsum dolor sit amet, consectetur adipiscing elit. Integer nec odio. Praesent libero. Sed cursus ante dapibus diam. Sed nisi. Nulla quis sem at nibh elementum.

EPISODE 5: "LOREM IPSUM"

Lorem ipsum dolor sit amet, consectetur adipiscing elit. Integer nec odio. Praesent libero. Sed cursus ante dapibus diam. Sed nisi. Nulla quis sem at nibh elementum.

EPISODE 6: "LOREM IPSUM"

Lorem ipsum dolor sit amet, consectetur adipiscing elit. Integer nec odio. Praesent libero. Sed cursus ante dapibus diam. Sed nisi. Nulla quis sem at nibh elementum.

FUTURE SEASONS

SEASON 1

The first season ends with Gleason learning that his partner Lance has been covering up for the criminal syndicate.

SEASON 2

The second season focuses on Gleason trying to force Lance to do the right thing, but ultimately having to confront and arrest him. Meanwhile Gleason and ALISON become close. At the end of the season Max is kidnapped.

SEASON 3

The third season begins with the quest to get Max back. Gleason leaves the force to take matters into his own hands.



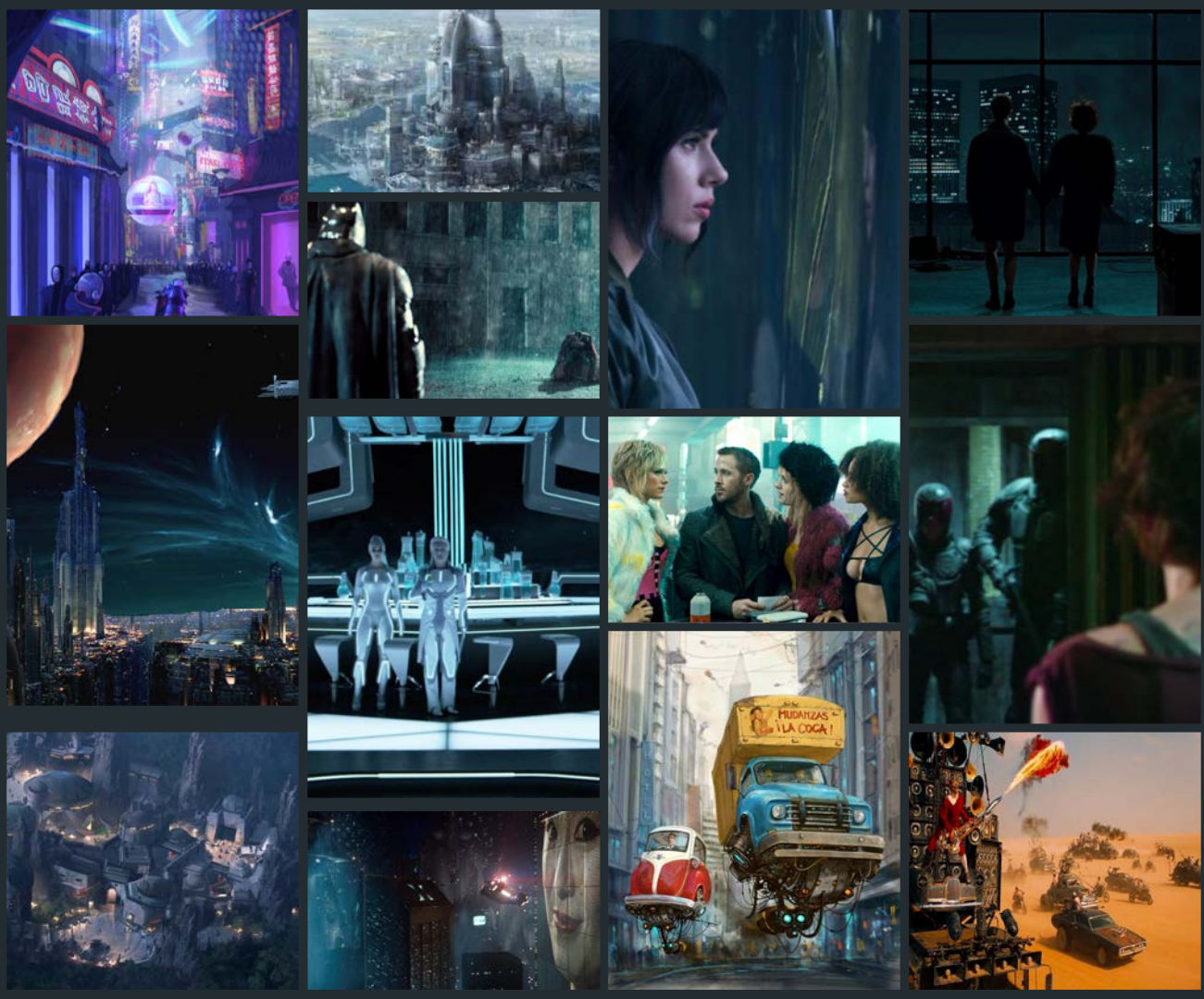
TONE

A hand-held 'gritty' camera aesthetic to compliment the dramatic and modern sci-fi production design.

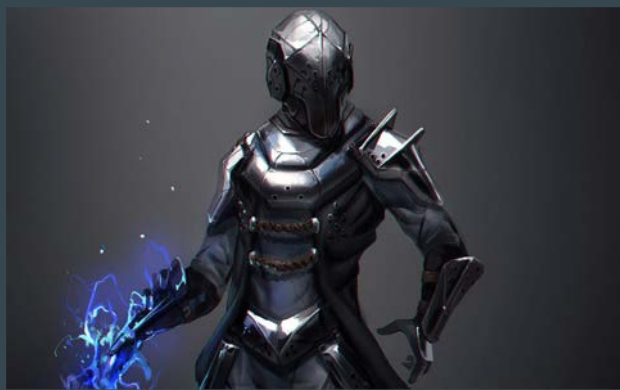
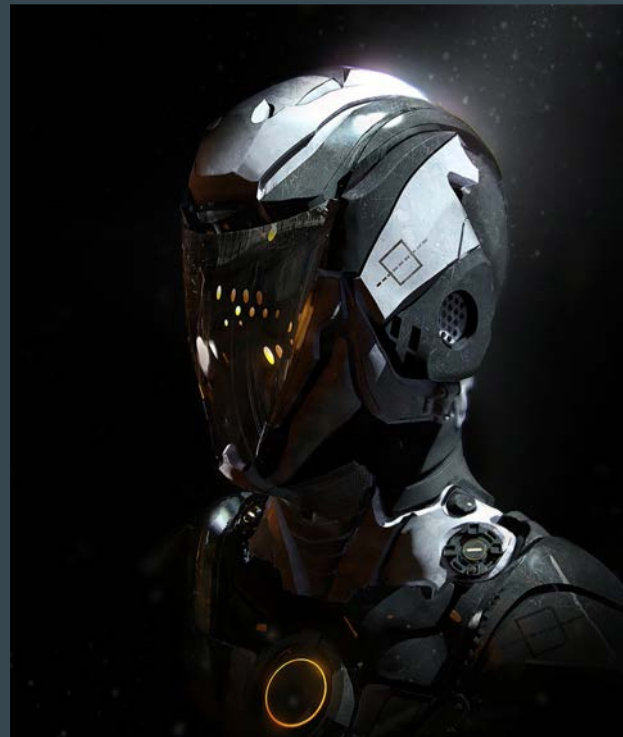
Visual components from *District 9*, or *Dredd*, as well as from *Blade Runner 2049*.

Sci-fi cityscapes done as old-school matte paintings lends a certain nostalgia to the texture, but also a cool unique look audiences aren't as used to today.

Shy away from CG and look for practical effects, creature masks, and animatronics. A more "lived in" feel.



TONE



WORLD BUILDING



MOODBOARD



CSI: Interstellar Post

E: [your email address]

P: [xxx-xxx-xxxx]

Social: @yourhandle